

**Fritchley CofE  
(Aided) Primary and  
Nursery School**



**Safeguarding**

**Designated Safeguarding Leads**

Rosie Turner  
Louise Shaw  
Di Fretwell – Safeguarding Governor

**Meetings**

Standard agenda at weekly staff meetings  
DSL meet regularly and share information

**Staff Training**

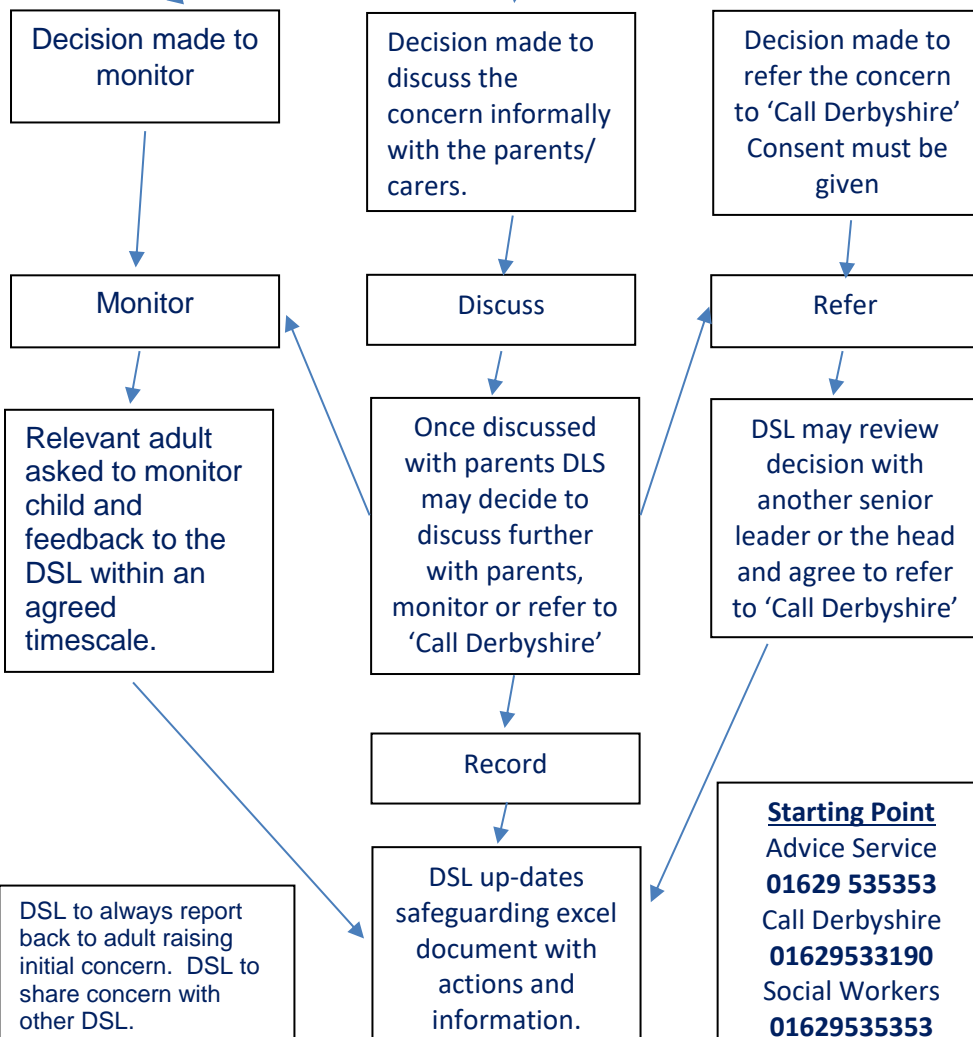
Annual whole staff training in September.  
Updates shared with staff when released.  
Safeguarding updates on all INSET days including quizzes.  
New staff induction involves safeguarding training including procedures used in school  
Headteacher attends locality training events each term  
Cyber Awareness training for all staff and governors

**Procedures**

Log concern on Mt Concern or complete a pink form found in classroom, office, staffroom.

Complete in detail with exact words said and give to DSL.

DSL reviews concern and makes a decision about next steps, documents on safeguarding excel document.



**Support for staff**

DSLs available daily  
Reminders on lanyards of procedures  
Reminders in staffroom, toilet and school office

**Support for pupils**

Positive 4 Young People (P4YP) half-a-day every week  
Social workers  
Early Help Advisor - DCC  
Bubble time in classrooms

**Support for families**

Signposting to support through ClassDojo  
Website links

**Curriculum**

NSPCC – Speak out, stay safe programme  
PSHE – Keeping safe, online safety, anti-bullying week, mental health week, daily meditation, metacognition A-Z

**Allegations/concerns against staff or volunteers follow LADO process (See flowchart in staffroom, office)**